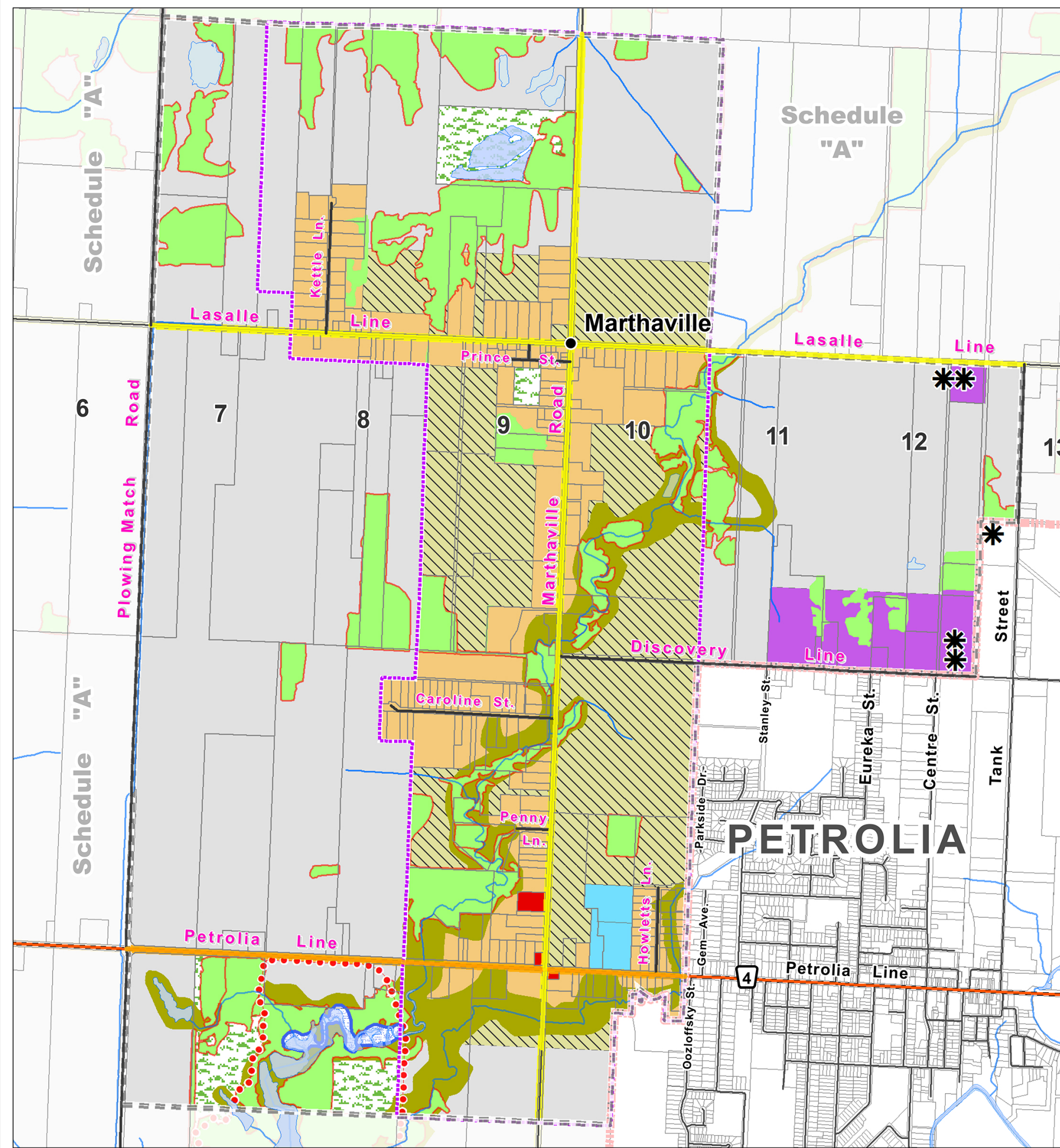


Township of Enniskillen OFFICIAL PLAN SCHEDULE "A" PART 1



LEGEND

- | | |
|-----------------------------|--|
| Assessment Parcels | Sewage Treatment Works |
| Provincial Highway | Active or Former Waste Disposal Site (Anderson Dataset : Lambton GWS 2004) |
| County Road | Municipal Boundary |
| Local Road | Schedule Inset Boundary |
| Railroad | Woodlot |
| Rivers - Streams - Drainage | Official Plan Amendment |
| Waterbodies | |

Official Plan - Designations

- Agricultural Area
- Restricted Agricultural Area
- Marthaville Residential
- Commercial
- Institutional
- Industrial
- Resource Extractive
- Open Space
- Marthaville Rural Settlement Area
- Wetland (MNR OWES)
- Hazard (SCRCA)
- Significant Woodlot (LCNHS)

Official Plan - Roads Plan

- Arterial Road
- Collector Road
- Local Road

Additional Information

- ESA (1979-1980)

Reference

Disclaimer: These digital mapping products have been produced on the County of Lambton's Geographic Information System. Data provided herein is derived from sources with varying levels of accuracy and currency. This is not a survey product. The County of Lambton disclaims all responsibility for the accuracy or completeness of information contained herein. The County of Lambton assumes no responsibility for errors arising from use of these digital mapping products.

The Official Plan information contained herein is current as of the last recorded amendment noted under "Official Plan Amendments".

- Cadastral database is current to June 2013.
- Wetlands database is current to June 2014.
- Hazard database is current to 2010.
- Significant Woodlot database is current to April 2013.
- Wooded Area database is current to April 2013.

Projection: UTM NAD 83 Zone 17

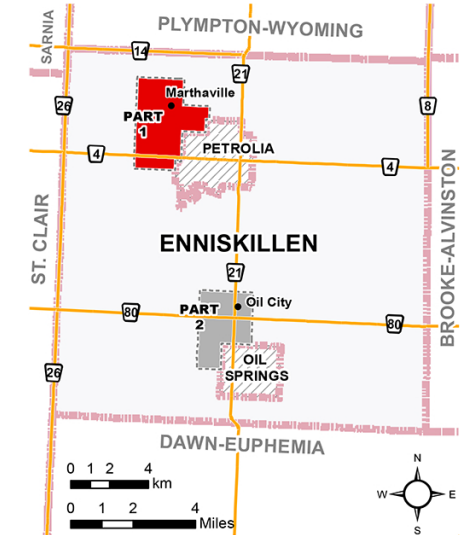
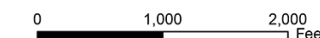
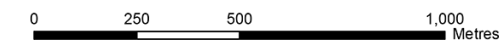
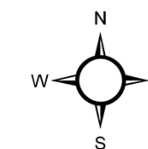
COUNTY OF LAMBTON
Planning and Development Services, August 2015

www.lambtononline.ca

Area Estimator



Notes: Area measures shown at left are typical of Concession/Lot arrangements in Enniskillen Twp.
Acre area measures can be converted to hectares (ha) by dividing by (2.471).



Township of Enniskillen OFFICIAL PLAN SCHEDULE "A" PART 1

to By-law No. 50 of 2015

Passed this 4 day of August, 2015

Kevin Marriott, Mayor

Duncan McTavish, Administrator-Clerk

Official Plan Amendments

OPA #5, July 15, 2024

